



MIDDLE PLAZA

CONSTRUCTION UPDATE

September 29, 2020

UPCOMING CONSTRUCTION ACTIVITIES

Concrete Pours

- Concrete pours for various portions of the project continue intermittently until March 2021.
- Possible impacts on El Camino Real may occur. Street impacts will be noted ahead of any activities that may interfere with traffic flow.

Garage

- Elevated deck shotcrete, waterproofing, and rebar installation are nearly complete. Steel structure erection, plumbing and sprinklers installation will follow.
- South side concrete pours for foundations and walls are ongoing. Shoring will begin during the first week of October. Underground utilities work will follow.
- North side underground utility installations, foundations pour, and shoring are ongoing.

Office Buildings

- **Building 1** elevator shaft rebar and foundations work are ongoing. Materials staging, steel erection, and bolting have paused and are expected to resume in March 2021 once concrete pours are complete.
- **Building 2** mechanical, electrical, plumbing, welding, and inspections continue through September. Preparation for concrete pours are underway, with prefabricated metal stud panel exterior framing anticipated for the second week of November.
- **Building 3** footing excavation and installation are underway. Steel erection is scheduled for 10/26.

Bioswale

- Footings, rebar, and concrete pours are ongoing and expected to finish by the end of the year.

Pursuant to the [San Mateo County Health Order](#) released on April 29, Middle Plaza construction activities are authorized to resume. Sitewide work restarted under appropriate COVID-19 protocols for construction projects, as recommended by the Centers for Disease Control and Prevention and local health officials.

Our commitment to the community continues, as we collect community feedback, share information, and mitigate as many impacts as possible to ensure the safety of construction workers and community members. We encourage all community members to **remain engaged with our communications channels** so we can collaborate and share information.

CONTACT INFORMATION

Community Relations Team

Construction Info Line:
(650) 497-4052

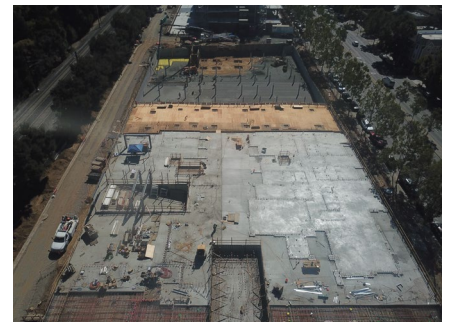
**After Hours/
Emergency Contact:**
911

Email:
middleplaza@stanford.edu

WEBSITE:
middleplaza.stanford.edu

**On-site Construction
Manager**
Nic Durham, Project Manager
ndurham@stanford.edu
(650) 725-2960

City of Menlo Park
(650) 330-6704



Aerial View of Construction Site

**Thanks for your patience
during construction.**