



MIDDLE PLAZA

# CONSTRUCTION UPDATE

October 21, 2020

## TEMPORARY EL CAMINO REAL LANE IMPACTS

**El Camino Real lane impacts anticipated on Wednesday, October 28.**

The Northbound traffic lane closest to the construction site will be temporarily closed from 9:00am to 3:00pm in order to accommodate construction equipment for structural steel installations.

Traffic control measures will be in place to ensure safety.

Pursuant to the [San Mateo County Health Order](#) released on April 29, Middle Plaza construction activities are authorized to resume. Sitewide work restarted under appropriate COVID-19 protocols for construction projects, as recommended by the Centers for Disease Control and Prevention and local health officials.

Our commitment to the community continues, as we collect community feedback, share information, and mitigate as many impacts as possible to ensure the safety of construction workers and community members. We encourage all community members to remain engaged with our communications channels so we can collaborate and share information.

## CONTACT INFORMATION

**Construction Info Line:**  
(650) 497-4052

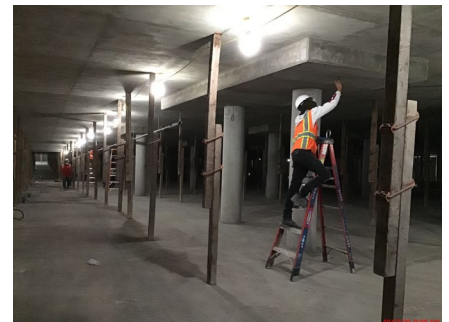
**After Hours/  
Emergency Contact:**  
911

**Email:**  
middleplaza@stanford.edu

**WEBSITE:**  
middleplaza.stanford.edu

**On-site Construction  
Manager**  
Nic Durham, Project Manager  
ndurham@stanford.edu  
(650) 725-2960

**City of Menlo Park**  
(650) 330-6704



Temporary Supporting Structure

**Thanks for your patience  
during construction.**