



MIDDLE PLAZA

CONSTRUCTION UPDATE

October 20, 2020

UPCOMING CONSTRUCTION ACTIVITIES

Concrete Pours

- Pours for various portions of the project will continue intermittently until March 2021.
- Possible impacts on El Camino Real may occur. Street impacts will be noted ahead of any activities that may interfere with traffic flow.

Garage

- Steel and temporary supporting structure erection, plumbing, and sprinkler installation continue.
- Underground utilities work will take place intermittently until March 2021.
- North side foundations pour, underground utilities, and temporary supporting structure installations are ongoing.

Office Buildings

- **Building 1** steel erection and bolting have paused and are expected to resume in March 2021 once the Garage basement concrete pours and first floor foundations are complete. Prefabricated metal stud exterior panel framing is anticipated to begin in July 2021 and continue until October 2021.
- **Building 2** mechanical, electrical, plumbing, and inspections continue. Basement level pours are complete, with ground level pours set to begin November 2. Prefabricated metal stud exterior panel framing is anticipated for the second week of November.
- **Building 3** Foundation pours are complete. Steel erection is scheduled for October 26.

Stormwater Drainage System

- Footings, steel reinforcement, and concrete pours are ongoing and expected to finish by the end of the year.

Pursuant to the [San Mateo County Health Order](#) released on April 29, Middle Plaza construction activities are authorized to resume. Sitewide work restarted under appropriate COVID-19 protocols for construction projects, as recommended by the Centers for Disease Control and Prevention and local health officials.

Our commitment to the community continues, as we collect community feedback, share information, and mitigate as many impacts as possible to ensure the safety of construction workers and community members. We encourage all community members to **remain engaged with our communications channels** so we can collaborate and share information.

CONTACT INFORMATION

Construction Info Line:
(650) 497-4052

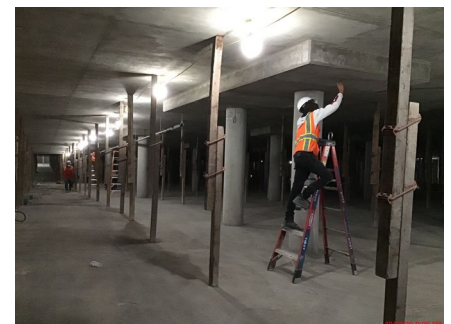
**After Hours/
Emergency Contact:**
911

Email:
middleplaza@stanford.edu

WEBSITE:
middleplaza.stanford.edu

**On-site Construction
Manager**
Nic Durham, Project Manager
ndurham@stanford.edu
(650) 725-2960

City of Menlo Park
(650) 330-6704



Temporary Supporting Structure

**Thanks for your patience
during construction.**