



## CONSTRUCTION ACTIVITIES

### El Camino Real (ECR) Lane Closures

**Sidewalk and street operations require additional construction on Saturdays through August.** This work will occur during regular construction hours of 8am–4pm.

Sidewalk reconstruction, including traffic signal installation, continues north to south along ECR. **Lane closures are intermittent as sidewalk work takes place.** In addition, **northbound pedestrian sidewalk traffic is rerouted to the southbound side of El Camino Real** along the entire length of the project.

Flaggers and signage are present to direct vehicle and pedestrian traffic and ensure safety. Noise levels are monitored to ensure work is performed within necessary compliance levels.

In summary, remaining ECR work will follow this approximate construction schedule:

- **Sidewalk Work:** June–August
- **Roadway Repaving:** September



## CONTACT INFORMATION

**Construction Information Line**  
(650) 497-4052

**Email**  
middleplaza@stanford.edu

**Website**  
middleplaza.stanford.edu



# CONSTRUCTION UPDATE

August 23, 2022

## CONSTRUCTION ACTIVITIES (continued)

### Other Offsite Impacts

- ADA ramp work is in progress.

### Office Buildings

#### Building 1

- Interior modifications and installation of elevators 2 and 3.
- Installation of the plaza fountain and planter boxes.
- Grading and rock work for pavers in the plaza.

#### Building 2

- Landscape planting.
- Startup, balance, and testing of mechanical, electrical and plumbing (MEP) systems and fire alarms.

#### Building 3

- Grading and pavers at main entry.

### Residential Buildings & Surrounding Areas

- Final inspections in Buildings B and C.
- Fire alarm safety testing. Sounds will occur intermittently during construction hours only.
- Electrical work and inspections in Building A.
- Elevator testing and adjustments in all buildings
- Courtyard deck pavers nearing completion. Fountains are now functional.
- Grading and ADA ramp installation along Caltrain tracks.
- Pool plastering and inspections upcoming.

### Garage

- Ongoing electrical and ADA inspections.
- Parking space striping.

### Stormwater Drainage System

- Ongoing bioswale landscaping.
- Water tie-in to follow.

## CONTACT INFORMATION

**Construction Information Line**  
(650) 497-4052

### Email

[middleplaza@stanford.edu](mailto:middleplaza@stanford.edu)

### Website

[middleplaza.stanford.edu](http://middleplaza.stanford.edu)

### On-site Construction Manager

Nic Durham

[ndurham@stanford.edu](mailto:ndurham@stanford.edu)

(650) 725-2960

### City of Menlo Park

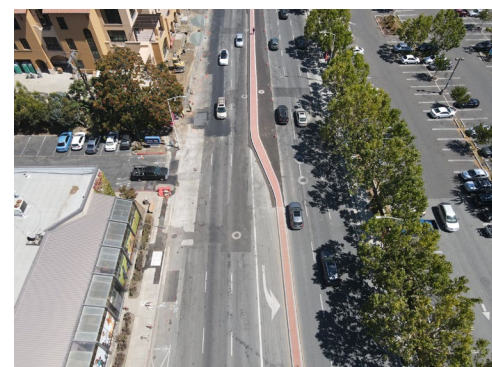
(650) 330-6704

### After Hours/Emergency

911

### Faculty Staff Housing - Leasing Information

[leasemiddleplaza@stanford.edu](mailto:leasemiddleplaza@stanford.edu)



Median Complete on ECR

**Thanks for your patience  
during construction**