



CONSTRUCTION UPDATE

April 20, 2021

UPCOMING CONSTRUCTION ACTIVITIES

Offsite Work

- Intermittent lane impacts for materials deliveries, crane installations, and work on elevated floors will continue through August.
- Future sidewalk and street improvement work expected to begin in June.

Office Buildings

Building 1

- Final steel erection, bolting and welding, and metal deck install are expected to complete by 4/23.
- Deck reinforcing and fill will start on 4/26 and finish by 5/7.
- Prefabricated exterior panel framing will take place from May to August.

Building 2

- Mechanical, electrical, plumbing, and window installations continue.
- Exterior stucco installation has begun on the east side (near train tracks), followed by the south, west (El Camino Real), courtyard, and north sides.
- Roof underlayment and clay tile installation are ongoing.

Building 3

- Work continues on mechanical, plumbing, and electrical installations.
- Prefabricated exterior panel framing will continue through June.

Residential Buildings

- Exterior sheathing, roofing, and detailing are ongoing.
- Interior construction continues, including elevator installations, fireproofing, walls, and steel stairs. Mechanical, electrical, and plumbing work begins this month. Inspections are anticipated to begin at the end of April.
- Courtyard construction at Buildings B and C is in progress.
- Truss installations anticipated for 4/26 and 4/29.
- Wood framing is expected to be completed according to the following schedule:
 - **Building A:** end of June
 - **Building B:** end of May
 - **Building C:** end of April

CONTACT INFORMATION

Construction Information Line
(650) 497-4052

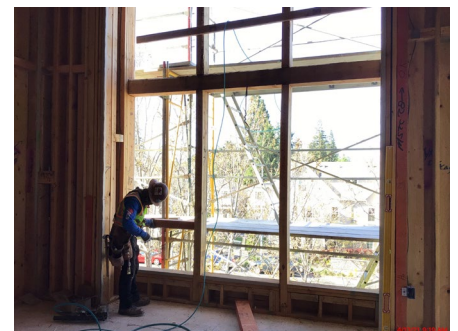
Email
middleplaza@stanford.edu

Website
middleplaza.stanford.edu

On-site Construction Manager
Nic Durham
ndurham@stanford.edu
(650) 725-2960

City of Menlo Park
(650) 330-6704

After Hours/Emergency
911



Completing Framing for Residential Building

Thanks for your patience during construction



MIDDLE PLAZA

CONSTRUCTION UPDATE

April 20, 2021

UPCOMING CONSTRUCTION ACTIVITIES (continued)

Garage

- Shoring, steel, and temporary supporting structure erection continue.
- Plumbing, HVAC, electrical and sprinkler system inspections continue.

Stormwater Drainage System

- Water tie-in will begin once water line installations for Office Buildings 2 and 3 are complete.
- Bioswale and onsite landscaping will follow.

Sanitary Sewer Connection Across El Camino Real Night Work

- Multiple lanes of traffic will be intermittently closed from late May through July 2021 for excavation and installation of sanitary sewer connections across El Camino Real.
- Caltrans requires this work take place at night when traffic levels are lower and there is less impact on commuters. Work will take place Sundays-Thursdays from 9pm-6am. **More information will be shared as it becomes available.**



Middle Plaza Site Plan

CONTACT INFORMATION

Construction Information Line
(650) 497-4052

Email
middleplaza@stanford.edu

Website
middleplaza.stanford.edu