



# CONSTRUCTION UPDATE

March 1, 2022

## UPCOMING CONSTRUCTION ACTIVITIES

### El Camino Real (ECR) Lane Closures

ECR work continues intermittently according to this approximate construction schedule:

- **Median Work:** March–May 2022
- **Roadway Repaving:** April–May 2022

### Other Offsite Impacts

- Sidewalk and street improvement work continues.

### Office Buildings

#### Building 1

- Installation of drywall and insulation continues.
- Interior modifications and installation of elevators 2 and 3 continues.
- Exterior painting continues.
- Waterproofing of the balconies continues.
- Roof tile and membrane installations continue.

#### Building 2

- Landscape planting and balcony planters continues.
- Installation of the wood trellis beams at the balcony continues.
- In the basement, fence and bicycle locker installation continues.
- Driveway paver installation continues.
- Concrete pours for planter boxes, sidewalks, curbs and gutters are ongoing.

#### Building 3

- Emergency generator infrastructure and concrete pad construction at the south side continues.
- Concrete pours for sidewalks, curbs and gutters are ongoing.
- Driveway paver installation continues.

## CONTACT INFORMATION

**Construction Information Line**  
(650) 497-4052

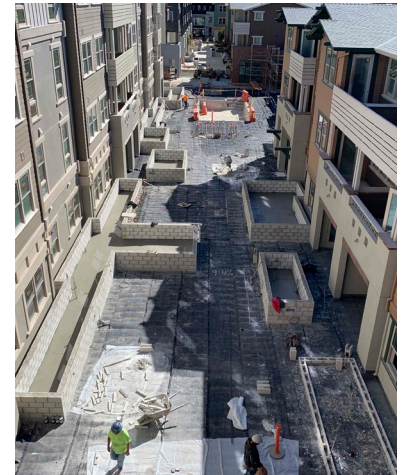
**Email**  
middleplaza@stanford.edu

**Website**  
middleplaza.stanford.edu

**On-site Construction Manager**  
Nic Durham  
ndurham@stanford.edu  
(650) 725-2960

**City of Menlo Park**  
(650) 330-6704

**After Hours/Emergency**  
911



North Side Courtyard Planters In Progress

**Thanks for your patience during construction**



MIDDLE PLAZA

# CONSTRUCTION UPDATE

March 1, 2022

## UPCOMING CONSTRUCTION ACTIVITIES (continued)

### Residential Buildings & Surrounding Areas

- Exterior scaffolding is expected to be taken down by early March.
- Final mechanical, electrical and plumbing inspections for yoga studios are in progress.
- Construction of co-working spaces, community rooms, lounge, and lobby continues.
- Exterior sheathing, roofing, detailing, and inspections continue.
- Siding, weatherproofing, and exterior painting continues for Buildings A and B.
- Construction of courtyard planters on north side continues.
- Interior construction and inspections for Building A, B and C continue.
- Electrical installations continue.
- Balcony railing work continues.
- Pool equipment installation continues.

### Garage

- HVAC and electrical inspections are nearing completion.
- Meter installation is expected to complete by early March.
- Seismic bracing continues.
- Insulation and steel installation are ongoing.

### Stormwater Drainage System

- Water tie-in is nearing completion, pending inspections.
- Bioswale and onsite landscaping will follow.



Middle Plaza Site Plan

## CONTACT INFORMATION

**Construction Information Line**  
(650) 497-4052

**Email**  
middleplaza@stanford.edu

**Website**  
middleplaza.stanford.edu