



MIDDLE PLAZA

# CONSTRUCTION UPDATE

December 15, 2020

## UPCOMING CONSTRUCTION ACTIVITIES

### El Camino Real lane impacts anticipated 12/22, 1/12/21, 1/19, 1/22, & 11/26.

- The northbound traffic lane closest to the construction site will be temporarily closed from 8:00am to 6:00pm on these dates to accommodate concrete pours. Traffic control measures will be in place to ensure safety.

### Concrete Pours

- Pours for various portions of the project will continue intermittently through March 2021.

### Garage

- Steel and temporary supporting structure erection, plumbing, sprinkler system inspections continue.
- Underground utilities work will take place intermittently until March 2021.
- North side foundations pour, underground utilities, and temporary supporting structure installations are ongoing.
- Materials deliveries contribute to truck traffic along El Camino Real.

### Office Buildings

- **Building 1** steel erection and bolting have paused and are expected to resume in March 2021 once the Garage basement concrete pours and first floor foundations are complete. Prefabricated metal stud exterior panel framing is anticipated to take place between July and October 2021.
- **Building 2** mechanical, electrical, and plumbing installations continue. Above ground concrete deck pours have begun. Prefabricated metal stud exterior panel framing has begun.
- **Building** bolting and welding of the frame and metal deck will continue until mid-December. The elevator pit and the plumbing and electrical underground have started. The level 1 parking garage pour anticipated for the end of January 2021. Prefabricated metal stud exterior panel framing is anticipated to begin in April 2021.

### Residential Building

- Wood framing has begun and is expected to continue until Summer 2021.

### Stormwater Drainage System

- Footings, steel reinforcement, and concrete pours are ongoing and expected to finish by the end of the year.

Pursuant to the [San Mateo County Health Order](#) released on April 29, Middle Plaza construction activities are authorized to resume. Sitewide work restarted under appropriate COVID-19 protocols for construction projects, as recommended by the Centers for Disease Control and Prevention and local health officials.

Our commitment to the community continues, as we collect community feedback, share information, and mitigate as many impacts as possible to ensure the safety of construction workers and community members. We encourage all community members to remain engaged with our communications channels so we can collaborate and share information.

## CONTACT INFORMATION

**Construction Info Line:**  
(650) 497-4052

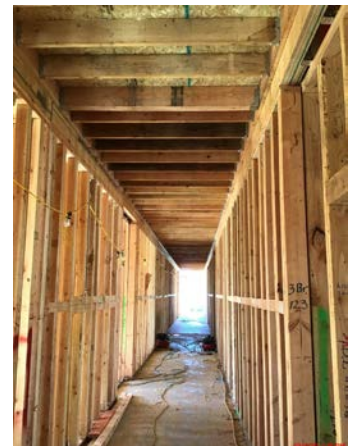
**After Hours/  
Emergency Contact:**  
911

**Email:**  
middleplaza@stanford.edu

**WEBSITE:**  
middleplaza.stanford.edu

**On-site Construction Manager**  
Nic Durham, Project Manager  
ndurham@stanford.edu  
(650) 725-2960

**City of Menlo Park**  
(650) 330-6704



Framing of Building Corridors

**Thanks for your patience  
during construction.**