



MIDDLE PLAZA

# CONSTRUCTION UPDATE

November 3, 2020

## UPCOMING CONSTRUCTION ACTIVITIES

### El Camino Real lane impacts anticipated on Wednesday, November 4.

The northbound traffic lane closest to the construction site will be temporarily closed from 9:00am to 5:00pm to accommodate construction debris removal. Traffic control measures will be in place to ensure safety.

### Concrete Pours

- Pours for various portions of the project will continue intermittently through March 2021.

### Garage

- Steel and temporary supporting structure erection, plumbing, and sprinkler installation continue.
- Underground utilities work will take place intermittently through March 2021.
- North side foundations pour, underground utilities, and temporary supporting structure installations are ongoing.

### Office Buildings

- **Building 1** steel erection and bolting have paused and are expected to resume in March 2021 once the Garage basement concrete pours and first floor foundations are complete. Prefabricated metal stud exterior panel framing is anticipated to begin in July 2021 and continue through October 2021.
- **Building 2** mechanical, electrical, plumbing, and inspections continue. Ground level pours have begun. Prefabricated metal stud exterior panel framing is anticipated for the first week of December.
- **Building 3** steel erection continues.

### Stormwater Drainage System

- Footings, steel reinforcement, and concrete pours are ongoing and expected to finish by the end of the year.

Pursuant to the [San Mateo County Health Order](#) released on April 29, Middle Plaza construction activities are authorized to resume. Sitewide work restarted under appropriate COVID-19 protocols for construction projects, as recommended by the Centers for Disease Control and Prevention and local health officials.

Our commitment to the community continues, as we collect community feedback, share information, and mitigate as many impacts as possible to ensure the safety of construction workers and community members. We encourage all community members to remain engaged with our communications channels so we can collaborate and share information.

## CONTACT INFORMATION

**Construction Info Line:**  
(650) 497-4052

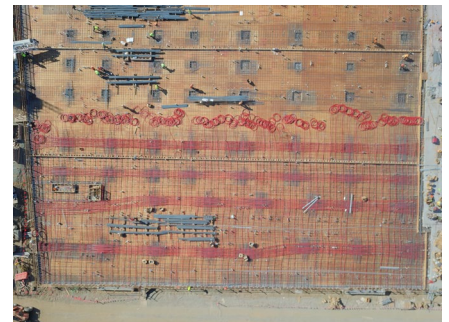
**After Hours/  
Emergency Contact:**  
911

**Email:**  
middleplaza@stanford.edu

**WEBSITE:**  
middleplaza.stanford.edu

**On-site Construction  
Manager**  
Nic Durham, Project Manager  
ndurham@stanford.edu  
(650) 725-2960

**City of Menlo Park**  
(650) 330-6704



**Aerial View of Steel  
Reinforcement**

**Thanks for your patience  
during construction.**