



MIDDLE PLAZA

CONSTRUCTION UPDATE

January 19, 2021

UPCOMING CONSTRUCTION ACTIVITIES

Concrete Pours

- **El Camino Real lane impacts tentatively expected on 1/28 and 2/16.**
The northbound traffic lane closest to the construction site will be temporarily closed from 8:00am to 6:00pm on these dates to accommodate concrete pours. Traffic control measures will be in place to ensure safety.
- Pours will continue intermittently through March 2021. This work may require after hours cleanup and site work with minimal noise impacts.

Garage

- Steel and temporary supporting structure erection, plumbing, sprinkler system inspections continue.
- Underground utilities work will take place intermittently through March 2021.
- North side foundations pour, underground utilities, and temporary supporting structure installations are ongoing.
- Materials deliveries contribute to truck traffic along El Camino Real.

Office Buildings

Building 1

- Steel erection and bolting are expected to resume in March 2021 once the garage basement concrete pours and first floor foundations are complete.
- Prefabricated metal stud exterior panel framing is anticipated to take place June-August 2021.

Building 2

- Mechanical, electrical, and plumbing installations continue.
- Above ground concrete deck pours are complete.
- Miscellaneous shotcrete and ramp work continues.
- Erection of prefabricated metal stud exterior panel framing and insulation board continues. Window installations have begun.

Building 3

- Bolting and welding of the frame and metal deck continues.
- Work continues on mechanical, plumbing and electrical rough in.
- The level 2 elevated deck pour is expected for the end of January 2021.
- Prefabricated metal stud exterior panel framing is anticipated April 2021.

Residential Building

- Wood framing has begun and is expected to continue until Summer 2021.

Stormwater Drainage System

- Footings, steel reinforcement, and concrete pours are ongoing and expected to finish by February 2021.

CONTACT INFORMATION

Construction Information Line
(650) 497-4052

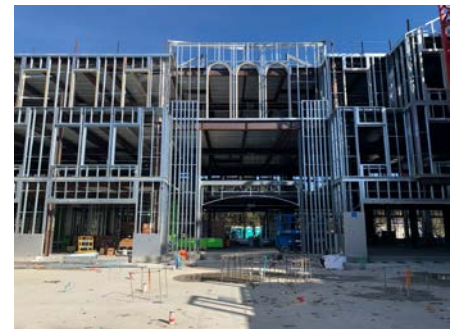
Email
middleplaza@stanford.edu

Website
middleplaza.stanford.edu

On-site Construction Manager
Nic Durham
ndurham@stanford.edu
(650) 725-2960

City of Menlo Park
(650) 330-6704

After Hours/Emergency
911



Office Building 2 Courtyard

**Thanks for your patience
during construction**